

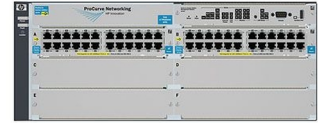


HP ProCurve 5406zl-48G Intelligent Edge Switch

Brand : HP

Product code: J8699A#ABA1071

Product name : ProCurve 5406zl-48G Intelligent Edge Switch



HP ProCurve 5406zl-48G Intelligent Edge Switch:

The HP ProCurve Switch 5400zl Series consists of the most advanced intelligent edge switches in the HP ProCurve Networking product line. The 5400zl series includes 6-slot and 12-slot chassis and associated zl modules and bundles. The foundation for all of these switches is a purpose-built, programmable ProVision ASIC that allows the most demanding networking features, such as Quality of Service (QoS) and security, to be implemented in a scalable yet granular fashion. With a variety of Gigabit interfaces, integrated PoE on all 10/100/1000Base-T ports, 10-GbE capability, and a choice of form factors, the 5400zl switches offer excellent investment protection, flexibility, and scalability, as well as ease of deployment, operation, and maintenance.

HP ProCurve 5406zl-48G Intelligent Edge Switch

Disclaimer. The information published here (the "Information") is based on sources that can be considered reliable, typically the manufacturer, but this Information is provided "AS IS" and without guarantee of correctness or completeness. The Information is only indicative and can be changed at any time without notification. No rights can be based on the Information. Suppliers or aggregators of this Information do not accept any liability with regard to the content of (web)pages and other documents, including its Information. The publisher of the Information can not be held liable for the content of 3rd party websites that are linking this Information or are linked to from this Information. You as the User of the Information are solely responsible for the choice and usage of this Information. You are not entitled to transfer, copy or otherwise multiply or distribute the Information. You are obliged to follow the directions of the copyright owner(s) with regard to the use of the Information. Exclusively Dutch law is applicable. With regard to price and stock data on the site, the publisher followed a number of starting points, which are not necessarily relevant for your private or business circumstances. Therefore, the price and stock data are only indicative and are subject to changes. You are personally responsible for the way you use and apply this information. As a user of the Information or sites or documents in which this Information is included, you will adhere to standard fair use including avoidance of spamming, ripping, intellectual-property violations, privacy violations, and any other illegal activity.

Publication date: 10-AUG-2025. Prints or copies of Information are only valid on the printed Publication date